An aerial photograph of a city skyline at sunset. The sky is a mix of blue and orange, with soft clouds. The city features numerous skyscrapers and buildings, some of which are illuminated. A river or lake is visible in the lower-left corner, with a bridge crossing it. The overall scene is vibrant and captures the end of the day in an urban setting.

# Learn How to Access and Read Your Campus OBM Summary Report in TEAL

Christine Bailie, Assistant Director, Postsecondary Preparation Programs  
Jennifer Broussard, Director, Research and Analysis  
August 29, 2019

# Objectives

## In this session, you will have the opportunity to:

- ✓ Learn how to access the TEAL portal and your OBM Summary Report
- ✓ Understand key elements of your OBM Summary Report
- ✓ Access resources to support and understand your OBM data
- ✓ Determine how to best utilize the OBM Summary Report to promote data-driven decision making
- ✓ Ask questions that will inform our FAQ for the CCRSM Network



## How to submit questions during the webinar:

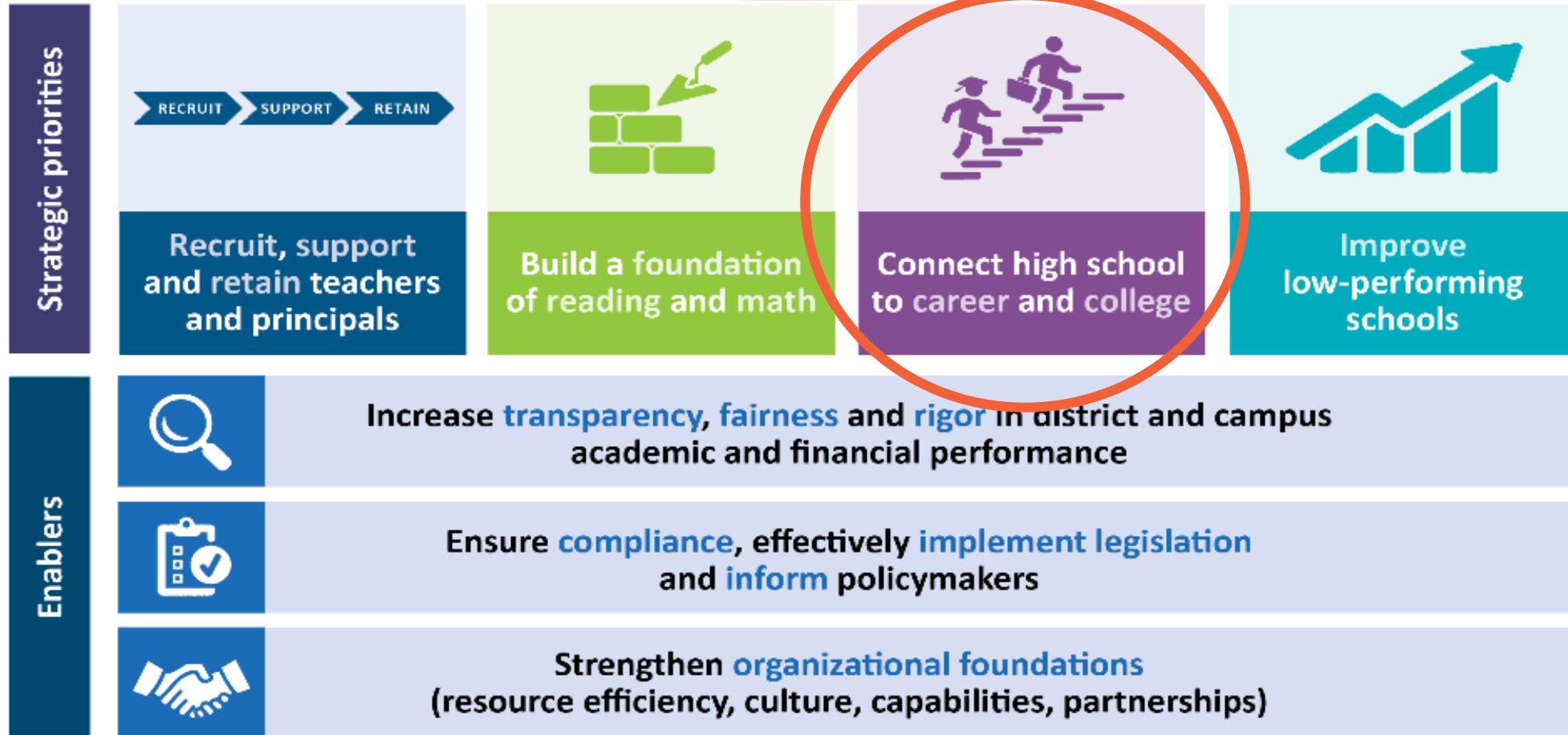
- At any point during the presentation type in your questions
- Use the “Questions” window so that we can capture your feedback
- An FAQ document will capture questions to share with the CCRSM Network



# The CCRSM Network and Outcomes-Based Measures

# Texas Education Agency Strategic Plan

Every child, prepared for success in college, a career or the military.

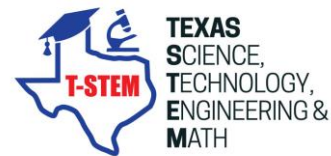


# Priority 3: Connect High School To College and Career



## College and Career Readiness School Models (ECHS, T-STEM, P-TECH & ICIA)

High school programs that deliver on the promise of rigorous college and career opportunities and training and provide advanced academics opportunities for students.





# Each CCRSM Model is Unique

**ECHS OBM**

Attainment Outcomes-Based Measures		Provisional Early College	Early College	Distinguished Early College
Data Indicators	Requirements	Must meet college English, college math, and 15 college credit targets	Must meet targets on at least five attainment data	Must meet targets on at least six attainment data
Grade-to-grade retention by subgroup (weighted)	Not taken into account for designation			
Completing one college-level English course by end of 11th grade (any)	80% of students (by the fourth year of implementation)			
Completing one college-level math course by end of 11th grade (any)	80% of students (by the fourth year of implementation)			
Earning 15 college credits (any) by graduation	50% of students (by the fourth year of implementation)			
Earning 30 college credits (any) by graduation	Not taken into account for designation			
Earning postsecondary degree and/or credential by high school graduation	Not taken into account for designation			
Graduating high school in 4 years (4-year cohort graduation rate)	Not taken into account for designation			

**T-STEM OBM**

Attainment Outcomes-Based Measures		Provisional	Designated	Distinguished
Data Indicators	Requirements	Must meet college math or science, and 15 college credit targets	Must meet targets on at least five attainment data indicators	Must meet targets on at least six attainment data
Grade-to-grade retention by subgroup (weighted)	Not taken into account for designation			
Completing one college-level math or science course by end of 12th grade (any)	80% of students (by the fourth year of implementation)			
Participating in a Work-Based Learning placement/course by graduation	35% of STEM focused students (by the fourth year of implementation)			
Earning 15 college credits (any) by graduation	50% of students (by the fourth year of implementation)			
Earning postsecondary degree and/or credential by high school graduation	Not taken into account for designation			
Earning an industry certification by graduation	10% of STEM focused students (by the fourth year of implementation)			
Graduating high school in 4 years (4-year cohort graduation rate)	Not taken into account for designation			

**P-TECH/ICIA OBM**

Attainment Outcomes-Based Measures		Provisional	Designated	Designated with Excellence
Data Indicators	Requirements	Must meet college-level course and Work-Based Learning requirements	Must meet targets on at least four attainment data indicators	Must meet targets on at least five attainment data indicators
Grade-to-grade retention by subgroup (weighted)	Not taken into account for designation			
Completing one college-level course by end of 11th grade (any)	80% of students (by the fourth year of implementation)			
Earning postsecondary degree provided by an IHE by graduation	Not taken into account for designation			
Earning a postsecondary credential provided by an IHE by graduation	Not taken into account for designation			
Earning industry certification by high school graduation	Not taken into account for designation			
Earning postsecondary degree or postsecondary credential provided by an IHE or industry certificate by high school graduation	Not taken into account for designation			
Participating in a Work-Based Learning placement/course by graduation	35% of students (by the fourth year of implementation)			

# CCRSM Blueprints: Outcomes-Based Measures

Access Outcomes-Based Measures			
Data Indicators	Provisional Early College	Early College	Distinguished Early College
Requirements	Must meet at-risk students for incoming 9th graders and at least three additional target population data indicators	Must meet at-risk students for incoming 9th graders and at least three additional target population data indicators	Must meet at-risk students for incoming 9th graders and at least four additional target population data indicators
ECHS proportionate to or over-represents at-risk students for incoming 9th graders	No more than 20% points under district	No more than 15% points under district	No more than 10% points under district
ECHS proportionate to or over-represents African American students	No more than 10% points under district	No more than 5% points under district	Meets or over-represents district
ECHS proportionate to or over-represents Hispanic students	No more than 10% points under district	No more than 5% points under district	Meets or over-represents district
ECHS proportionate to or over-represents economically disadvantaged students	No more than 10% points under district	No more than 5% points under district	Meets or over-represents district
ECHS proportionate to or over-represents males	No more than 10% points under district	No more than 5% points under district	Meets or over-represents district
ECHS proportionate to or over-represents ELL and SWDs	Not taken into account for designation	Not taken into account for designation	No more than 5% points under

- Each Blueprint has distinct outcomes-based measures (OBMs).
- TEA will use student-level data captured in PEIMS to determine qualification for designation purposes after the initial OBM phase-in.
- OBMs allow for targeted support and technical assistance to increase success of models.



# Outcome-Based Measures Categories

## ACCESS

Student enrollment in model is proportionate to, or over-representative of, targeted subgroups in the entire district

## ATTAINMENT

Student completion of model's programming goals & targets

## ACHIEVEMENT

Student performance on various measures of college & career readiness while enrolled in model

***TEA is currently in a phase-in process for all CCRSM Blueprints. All data are for information and planning purposes only. This information was not be used to determine designation status. Currently, program designation status is based on the number of years of program operation.***



## Phase-In Of New Standards

- New Blueprints recently introduced
  - ECHS: 2017; P-TECH/ICIA & T-STEM: 2018
  - Design elements codified for each model
  - OBMs guide campus priorities for student success
- As campuses adjust to implementation of OBMs, they have provisional designation status => benchmarking and program improvement
- The phase in period for OBMs ends after 4 years
- OBMs will be used to determine designation status upon renewal in the 5<sup>th</sup> year (based on outcomes of your school's first cohort of graduating seniors)

# Outcomes-Based Measures Timeline

**2017**

New ECHS Blueprints launched with OBM for Access, Attainment, and Achievement

**2019**

ECHS's receive OBM data for students in grades 9-10 via TEAL portal

P-TECH/ICIA and T-STEM academies receive OBM data for students in grade 9

**2021**

ECHS receive OBM data for students in grades 9-12

P-TECH/ICIA & T-STEM receive OBM data for grades 9-11

**2023**

**Full implementation for ECHS's;** receive OBM data for students in grades 9-12

**Full implementation for P-TECH/ICIA & T-STEM;** receive OBM data for grades 9-12

**2018**

Early College High Schools receive OBM data for 9<sup>th</sup> graders via letter to the superintendent upon renewal of program

New P-TECH/ICIA and T-STEM Blueprints launched with OBM

**2020**

ECHS receive OBM data for students in grades 9-11

P-TECH/ICIA & T-STEM receive OBM data for grades 9-10

**2022**

**Full implementation for ECHS's;** receive OBM data for students in grades 9-12

P-TECH/ICIA & T-STEM receive OBM data for grades 9-12

# OBM Now Available for 2019-20 Designation

## ECHS

- Provisional (1-4 years)
  - 9<sup>th</sup> & 10<sup>th</sup> grade students only; Access only
  - Provisional metrics used
- Designated (5+ years)
  - 9<sup>th</sup> & 10<sup>th</sup> grades; Access and Algebra I EOC
  - Designated metrics used
- Distinguished (5+ years)
  - 9-12 grades; All 3 categories of OBM
  - Distinguished metrics used

## T-STEM

- Provisional (1-4 years)
  - 9<sup>th</sup> grade students only; Access only
  - Provisional metrics used
- Designated (5+ years)
  - 9<sup>th</sup> grade students only; Access only
  - Designated Metrics used

## P-TECH/ICIA

- Provisional (1 year)
  - 9<sup>th</sup> grade students only; Access only
  - Provisional metrics used



## The TEAL Portal Brings Value to Our Work

- Leverages new PEIMS validation process for student-level data
- Shifts data sharing from PDF to interactive Excel format
- Provides one-stop shop for pulling campus-level OBM Summary Reports for an entire district => easy to share and compare
- Provides detailed data documentation for each program's OBMs
- Indicates whether each metric has been reached based on the designation status requested in the renewal application

# Who Needs to Be Involved



## Those with access to TEAL

- Superintendent
- Local policy determines who else may receive access to confidential data



## Those who make programmatic decisions

- CCRSM principal/ leader
- CCRSM college advisor
- District-level CCRSM lead



## Those responsible for accurate student data in TEAL

- CCRSM principal/ leader
- District/Campus PEIMS coordinator

# PEIMS Calendar



DATE	EVENT
	<b>PEIMS Fall Submission (Submission 1)</b>
October 25, 2019	PEIMS Fall snapshot date
December 5, 2019	PEIMS Fall first submission due date for LEAs and ESCs
January 16, 2020	PEIMS Fall resubmission due date for LEAs and ESCs
	<b>PEIMS Summer Submission (Submission 3)</b>
June 18, 2020	PEIMS Summer first submission due date for LEAs
July 16, 2020	PEIMS Summer resubmission due date for LEAs
	<b>PEIMS Extended Year Submission (Submission 4)</b>
August 27, 2020	PEIMS Extended Year first submission due date for LEAs
September 17, 2020	PEIMS Extended Year resubmission due date for LEAs



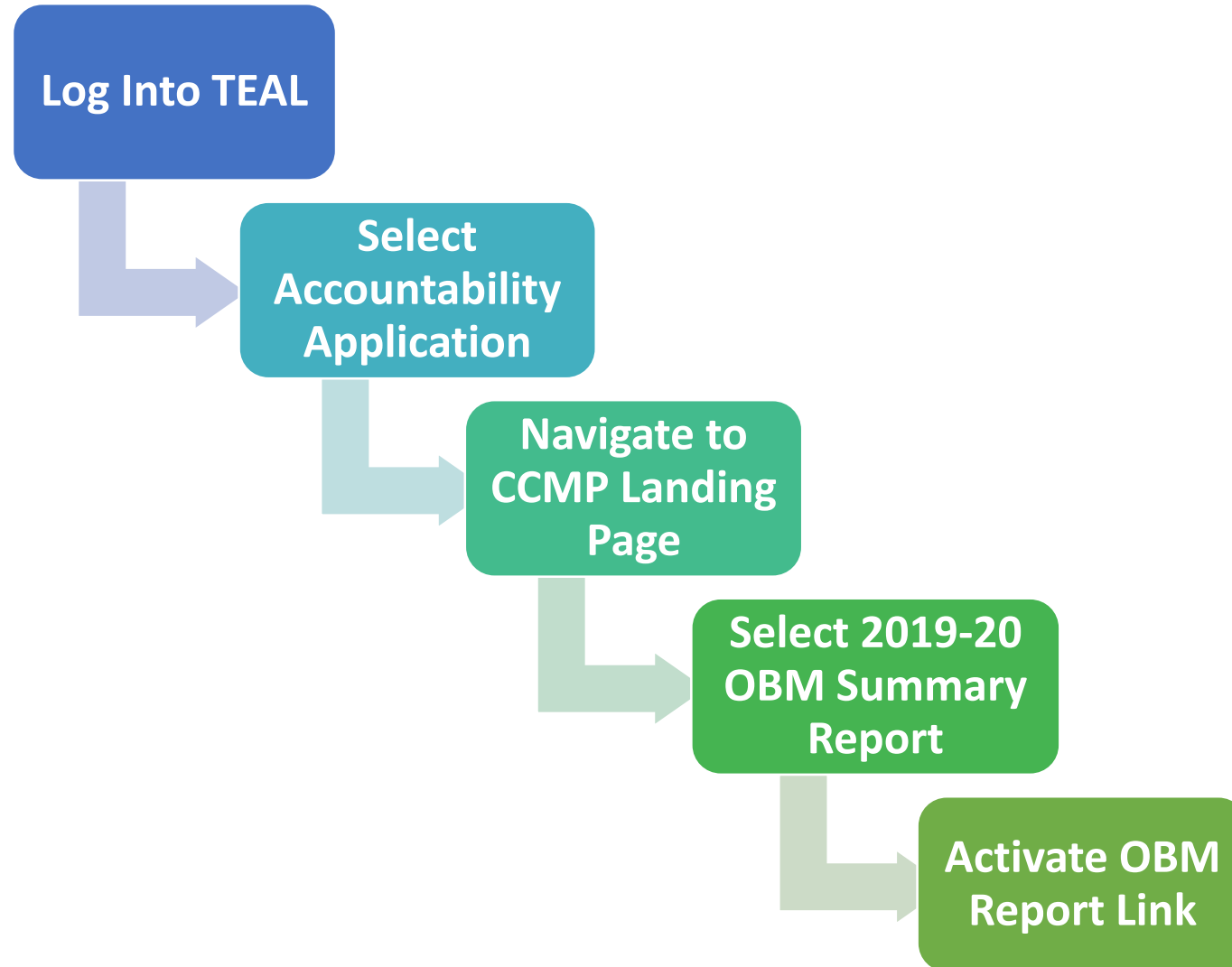
# Question & Answer: CCRSM Network & OBMs



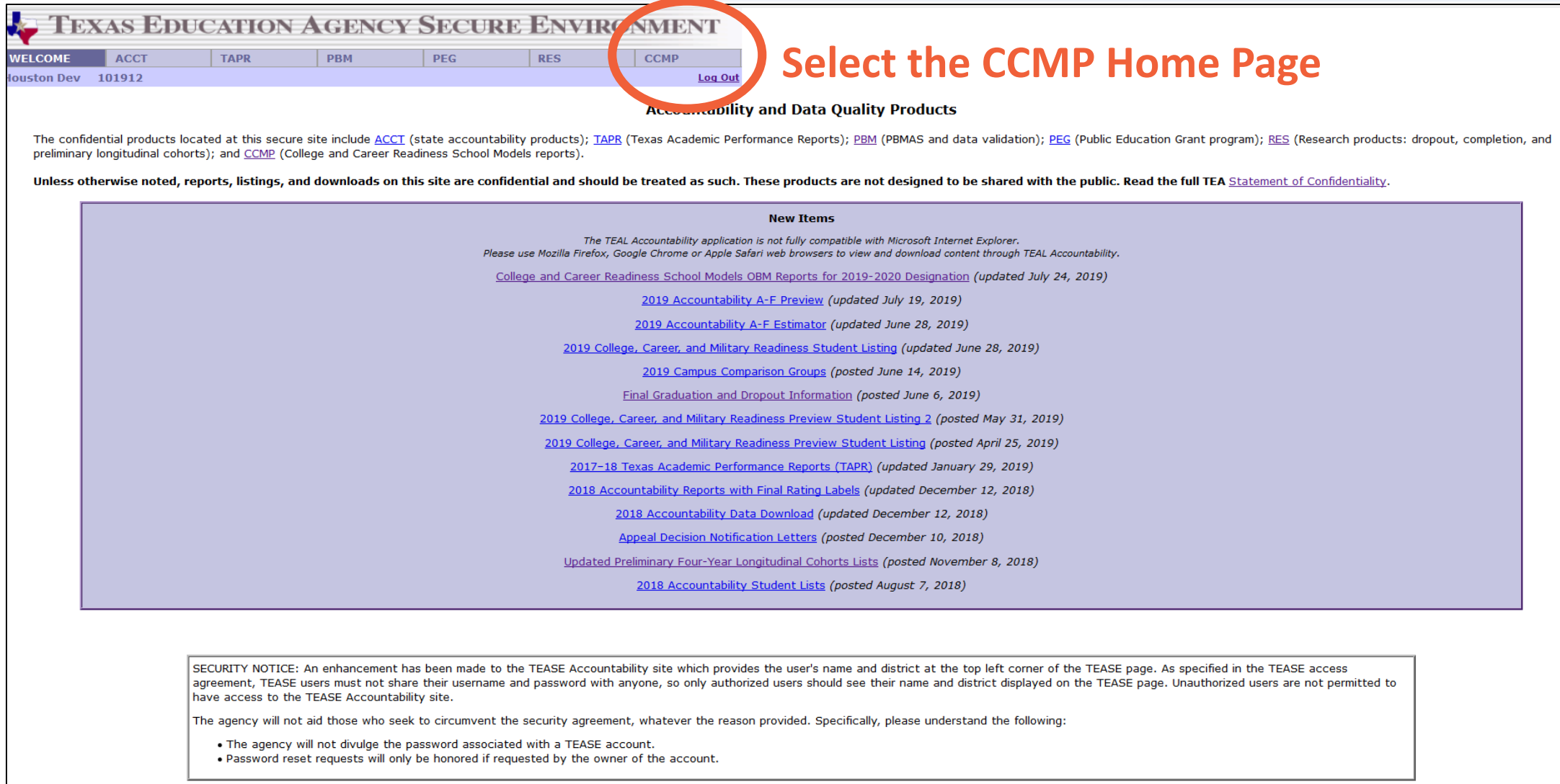


# Navigating the TEAL Portal and OBM Summary Reports

# Retrieving Your Report(s)



# Log Into TEAL



**TEXAS EDUCATION AGENCY SECURE ENVIRONMENT**

WELCOME ACCT TAPR PBM PEG RES **CCMP** Log Out  
Houston Dev 101912

## Select the CCMP Home Page

### Accountability and Data Quality Products

The confidential products located at this secure site include [ACCT](#) (state accountability products); [TAPR](#) (Texas Academic Performance Reports); [PBM](#) (PBMA and data validation); [PEG](#) (Public Education Grant program); [RES](#) (Research products: dropout, completion, and preliminary longitudinal cohorts); and [CCMP](#) (College and Career Readiness School Models reports).

**Unless otherwise noted, reports, listings, and downloads on this site are confidential and should be treated as such. These products are not designed to be shared with the public. Read the full TEA [Statement of Confidentiality](#).**

**New Items**

*The TEAL Accountability application is not fully compatible with Microsoft Internet Explorer.  
Please use Mozilla Firefox, Google Chrome or Apple Safari web browsers to view and download content through TEAL Accountability.*

[College and Career Readiness School Models OBM Reports for 2019-2020 Designation](#) (updated July 24, 2019)

[2019 Accountability A-F Preview](#) (updated July 19, 2019)

[2019 Accountability A-F Estimator](#) (updated June 28, 2019)

[2019 College, Career, and Military Readiness Student Listing](#) (updated June 28, 2019)

[2019 Campus Comparison Groups](#) (posted June 14, 2019)

[Final Graduation and Dropout Information](#) (posted June 6, 2019)

[2019 College, Career, and Military Readiness Preview Student Listing 2](#) (posted May 31, 2019)

[2019 College, Career, and Military Readiness Preview Student Listing](#) (posted April 25, 2019)

[2017-18 Texas Academic Performance Reports \(TAPR\)](#) (updated January 29, 2019)

[2018 Accountability Reports with Final Rating Labels](#) (updated December 12, 2018)

[2018 Accountability Data Download](#) (updated December 12, 2018)

[Appeal Decision Notification Letters](#) (posted December 10, 2018)

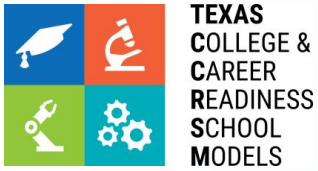
[Updated Preliminary Four-Year Longitudinal Cohorts Lists](#) (posted November 8, 2018)

[2018 Accountability Student Lists](#) (posted August 7, 2018)

**SECURITY NOTICE:** An enhancement has been made to the TEASE Accountability site which provides the user's name and district at the top left corner of the TEASE page. As specified in the TEASE access agreement, TEASE users must not share their username and password with anyone, so only authorized users should see their name and district displayed on the TEASE page. Unauthorized users are not permitted to have access to the TEASE Accountability site.

The agency will not aid those who seek to circumvent the security agreement, whatever the reason provided. Specifically, please understand the following:

- The agency will not divulge the password associated with a TEASE account.
- Password reset requests will only be honored if requested by the owner of the account.



# College, Career & Military Prep Home Page

TEXAS EDUCATION AGENCY SECURE ENVIRONMENT

WELCOME ACCT TAPR PBM PEG RES CCMP

Houston Dev 101912 [Log Out](#)

## College, Career, and Military Prep

The Division of College, Career, and Military Preparation (CCMP) works to ensure that all Texas high school students have access to high-quality pathways to career and college. CCMP collaborates with institutions of higher education and workforce partners to build pathways for student success, promoting best practices to support students through their pathways to college, career, and/or the military. We will achieve this through providing districts with options for effective evidence-based school models and resources and by identifying and promoting pathways that connect college to career.

A keystone initiative for CCMP is College and Career Readiness School Models (CCRSM) which builds robust pathways for underserved students. This initiative allows campuses to provide clearly defined pathways for students to earn an associate degree and/or 60 hours towards a baccalaureate, industry-based certifications and/or licensures, and engage in work-based learning by the time they graduate. CCRSMs include: Early College High School (ECHS), Texas Science Technology Engineering and Math (T-STEM) Academies, Pathways in Technology Early College High School (P-TECH) and Industry Cluster Innovative Academies (ICIA). Each model has a designation process and a Blueprint containing benchmarks, design elements, and rigorous outcomes-based measures (OBMs) to quantify student impact. Campuses may retrieve their OBMs on an annual basis through the TEAL portal as they strive to improve student outcomes over time.

Please note that products available through this site are unmasked, so student confidentiality is not protected. Therefore, these products must be treated as confidential (click here for TEA's [Statement of Confidentiality](#)).

Access to information is temporary. Districts are encouraged to save the reports provided on this site to a local secured location. The reports will be replaced with more current information as it becomes available. See the specific products for a timeline of data releases.

## CCMP Information

[Outcomes-Based Measures \(OBM\) Summary Report for 2019-2020 Designation \(updated July 24, 2019\)](#)  
Click to access the OBM report in summary format. Refer to [How to Read the Outcomes-Based Measures \(OBM\) Summary Report for 2019-2020 Designation](#) for more information.

For questions or comments about the Summary Report, please email [ccrsm@tea.texas.gov](mailto:ccrsm@tea.texas.gov) to contact the College and Career Readiness School Models Team.

This page last updated July 24, 2019

# You Have Responsibility For Protecting Data

## TEA's Statement of Confidentiality

*TEAL is intended for authorized district and ESC use only. Data on the TEAL Accountability application are not masked and are not presented in a way that protects student confidentiality. The data, therefore, should be handled in accordance with the Family Educational Rights and Privacy Act (FERPA).*

## College, Career, and Military Prep

The Division of College, Career, and Military Preparation (CCMP) works to ensure that all Texas high school students have access to high-quality pathways to career and college. CCMP collaborates with institutions of higher education and workforce partners to build pathways for student success, promoting best practices to support students through their pathways to college, career, and/or the military. We will achieve this through providing districts with options for effective evidence-based school models and resources and by identifying and promoting pathways that connect college to career.

A keystone initiative for CCMP is College and Career Readiness School Models (CCRSM) which builds robust pathways for underserved students. This initiative allows campuses to provide clearly defined pathways for students to earn an associate degree and/or 60 hours towards a baccalaureate, industry-based certifications and/or licensures, and engage in work-based learning by the time they graduate. CCRSMs include: Early College High School (ECHS), Texas Science Technology Engineering and Math (T-STEM) Academies, Pathways in Technology Early College High School (P-TECH) and Industry Cluster Innovative Academies (ICIA). Each model has a designation process and a Blueprint containing benchmarks, design elements, and rigorous outcomes-based measures (OBMs) to quantify student impact. Campuses may retrieve their OBMs on an annual basis through the TEAL portal as they strive to improve student outcomes over time.

Please note that products available through this site are unmasked, so student confidentiality is not protected. Therefore, these products must be treated as confidential (click here for TEA's [Statement of Confidentiality](#)).

Access to information is temporary. Districts are encouraged to save the reports provided on this site to a local secured location. The reports will be replaced with more current information as it becomes available. See the specific products for a timeline of data releases.

## CCMP Information

Click to access the OBM report in summary format. Refer to [How to Read the Outcomes-Based Measures \(OBM\) Summary Report for 2019-2020 Designation](#) for more information.

## Resource

For questions or comments about the Summary Report, please email [ccrsm@tea.texas.gov](mailto:ccrsm@tea.texas.gov) to contact the College and Career Readiness School Models Team.

This page last updated July 24, 2019

# How To Read Your OBM Summary Report



## Supporting Explanation Documentation

- Guidepost for each component
- Available to download and share *outside* of TEAL portal

**HOW TO READ YOUR OUTCOMES-BASED MEASURES SUMMARY REPORT FOR THE 2019-20 DESIGNATION YEAR**

**Report Guide**

A. Header provides the DISTRICT NAME and DISTRICT NUMBER for the searched district.

B. Header provides and COMPARISON DISTRICT NAME and COMPARISON DISTRICT NUMBER that the College and Career Readiness School Model (CCRSM) programs will be compared to for Access measures.

C. Campus section header provides CAMPUS NAME and CAMPUS NUMBER. All Outcome-Based Measures (OBM) data on any particular tab relate to the district indicated by the header (A).

D. PROGRAM lists the CCRSM program(s) for each campus including Early College High School (ECHS), Texas Science, Technology, Engineering and Mathematics Initiative (T-STEM), and Pathways in Technology Early College High School (P-TECH). Campuses implementing Industry Cluster Innovative Academy (ICIA) are evaluated based on the OBM stated in the P-TECHICIA Blueprint.

E. DESIGNATION TYPE shows the designation (Provisional, Designated, or Distinguished) for which the campus program was measured against.

F. OBM TYPE shows the categories of OBM calculated for the program including Access, Attainment, and Achievement. This allows for grouping of measures.

G. MEASURE shows the individual measure within the OBM TYPE.

H. OBM CRITERIA shows the standards that campuses must meet for each program's DESIGNATION TYPE.

I. CAMPUS NUMERATOR shows the student counts that are in the numerator of the campus rate for a particular measure.

J. CAMPUS DENOMINATOR shows the student counts that are in the denominator of the campus rate for a particular measure.

K. CAMPUS RATE shows the campus rate that is the CAMPUS NUMERATOR divided by the CAMPUS DENOMINATOR.

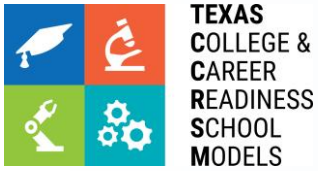
L. DISTRICT NUMERATOR shows the student counts that are in the numerator of the comparison district rate for a particular measure.

M. DISTRICT DENOMINATOR shows the student counts that are in the denominator of the comparison district rate for a particular measure.

N. DISTRICT RATE shows the comparison district rate that is the DISTRICT NUMERATOR divided by the DISTRICT DENOMINATOR. DISTRICT RATE only applies to Access OBM.

O. MET OBM CRITERIA shows whether a campus met (Yes) or did not meet (No) the OBM CRITERIA for a particular measure.

Program	Designation Type	OBM Type	Measure	OBM Criteria	Campus Num	Campus Den	Campus Rate	District Num	District Den	District Rate	Met OBM Criteria
ECHS	Distinguished	Access	At-Risk	No more than 10% points under district.	30	124	24.2%	24,011	46,625	51.5%	NO
			Economically Disadvantaged	Meets or over-represents district	40	124	32.3%	58,471	185,625	31.5%	YES
			English Learners <sup>2</sup>	No more than 5% points under district.	2	124	1.6%	15,963	185,625	8.6%	NO
			Students with Disabilities <sup>2</sup>	No more than 5% points under district.	3	124	2.8%	14,107	185,625	7.6%	YES
			African American	Meets or over-represents district	17	124	13.7%	38,424	185,625	20.7%	NO
			Hispanic	Meets or over-represents district	58	124	46.8%	64,968	185,625	35.0%	YES
			Males	Meets or over-represents district	54	124	43.5%	94,668	185,625	51.0%	NO
			Completing one college level English course by end of 11th grade <sup>1</sup>	100% of students	50	54	92.6%	N/A	N/A	N/A	NO
		Attainment	Completing one college level Math course by end of 11th Grade <sup>1</sup>	100% of students	30	54	55.6%	N/A	N/A	N/A	NO



# College, Career & Military Prep Home Page

TEXAS EDUCATION AGENCY SECURE ENVIRONMENT

WELCOME ACCT TAPR PBM PEG RES CCMP

Houston Dev 101912 [Log Out](#)

## College, Career, and Military Prep

The Division of College, Career, and Military Preparation (CCMP) works to ensure that all Texas high school students have access to high-quality pathways to career and college. CCMP collaborates with institutions of higher education and workforce partners to build pathways for student success, promoting best practices to support students through their pathways to college, career, and/or the military. We will achieve this through providing districts with options for effective evidence-based school models and resources and by identifying and promoting pathways that connect college to career.

A keystone initiative for CCMP is College and Career Readiness School Models (CCRSM) which builds robust pathways for underserved students. This initiative allows campuses to provide clearly defined pathways for students to earn an associate degree and/or 60 hours towards a baccalaureate, industry-based certifications and/or licensures, and engage in work-based learning by the time they graduate. CCRSMs include: Early College High School (ECHS), Texas Science Technology Engineering and Math (T-STEM) Academies, Pathways in Technology Early College High School (P-TECH) and Industry Cluster Innovative Academies (ICIA). Each model has a designation process and a Blueprint containing benchmarks, design elements, and rigorous outcomes-based measures (OBMs) to quantify student impact. Campuses may retrieve their OBMs on an annual basis through the TEAL portal as they strive to improve student outcomes over time.

Please note that products available through this site are unmasked, so student confidentiality is not protected. Therefore, these products must be treated as confidential (click here for TEA's [Statement of Confidentiality](#)).

Access to information is temporary. Districts are encouraged to save the reports provided on this site to a local secured location. The reports will be replaced with more current information as it becomes available. See the specific products for a timeline of data releases.

## CCMP Information

[Outcomes-Based Measures \(OBM\) Summary Report for 2019-2020 Designation \(updated July 24, 2019\)](#)

Click to access the OBM report in summary format. Refer to [How to Read the Outcomes-Based Measures \(OBM\) Summary Report for 2019-2020 Designation](#) for more information.


**Navigate to the OBM Landing Page**

For questions or comments about the Summary Report, please email [ccrsm@tea.texas.gov](mailto:ccrsm@tea.texas.gov) to contact the College and Career Readiness School Models Team.

This page last updated July 24, 2019



# OBM Landing Page


TEXAS EDUCATION AGENCY SECURE ENVIRONMENT

WELCOME	ACCT	TAPR	PBM	PEG	RES	CCMP
---------	------	------	-----	-----	-----	------

Houston Dev 101912 [Log Out](#)

## Outcomes-Based Measures (OBM) Summary Report for 2019-2020 Designation

College and Career Readiness School Models (CCRSM) are currently in a phase-in process for new Blueprints. These data are for information and planning purposes only. This information will not be used for designation.

The *Outcomes-Based Measures (OBM) Summary Report for 2019-2020 Designation* includes a report of the annual OBMs for each designated CCRSM including Early College High School (ECHS), Pathways in Technology Early College High School (P-TECH)/Innovative Career Industry Academies (ICIA), and Texas Science, Technology, Engineering, and Mathematics (T-STEM). For campuses operating multiple CCRSM, the report will include OBMs for each model operated. Campuses that are switching to a new CCRSM model in the 2019-2020 Designation Year will not receive a report this designation year.

Each report includes student performance measures that were calculated for that campus based on the designation type for each program. For districts with multiple CCRSM campuses, each campus appears on a separate tab of the district report.

**ECHS:**

- Provisional reports include all Access measures.
- Designated reports include all Access measures and the Algebra I EOC Achievement measure.
- Distinguished reports include all Access, Achievement, and Attainment measures.

**P-TECH:**

- Provisional reports include all Access measures.

**T-STEM:**

- Provisional reports include all Access measures.
- Designated reports include all Access measures.

**The data presented in these reports has not been used to determine 2019-2020 designation status. The report should be used as formative data to make programmatic decisions.**

Refer to the Designation Year Documentation for [ECHS](#), [P-TECH/ICIA](#), and [T-STEM](#) for additional technical information regarding the data definitions used in calculating the OBM for each CCRSM.

[Continue](#) Data Calculation Documentation

For questions or comments about the Summary Report, please email [ccrsm@tea.texas.gov](mailto:ccrsm@tea.texas.gov) to contact the College and Career Readiness School Models Team.

This page last updated July 24, 2019

Texas Education Agency Secure Environment  
 Texas Education Agency, 1701 Congress Ave, Austin, TX 78701-1494

# How TEA Calculated OBM



## Data Calculation Documentation

- Specific for each CCRSM model (ECHS, P-TECH/ICIA, & T-STEM)
- Precise definitions tied to PEIMS and other data sources.



### THE EARLY COLLEGE HIGH SCHOOL 2019-2020 CAMPUS DESIGNATION OUTCOMES-BASED MEASURES CALCULATION PROCESS

Early College High Schools (ECHS) are open-enrollment programs that allow students least likely to attend college an opportunity to earn a high school diploma, an associate degree or up to 60 college credit hours while participating in rigorous and accelerated instruction.

The Texas Education Agency (TEA) designed the designation process for ECHSs under the authority of Texas Education Code (TEC) §29.908(b) (2018) and Title 19 Texas Administrative Code (TAC) §102.1091 (effective 2007).

*TEA is currently in a phase-in process for the new ECHS Blueprint. All data are for information and planning purposes only. This information will not be used to determine designation status. Currently, the program designation status is based on the number of years of program operation.*

*After the phase-in period, designation status will be determined using outcomes-based measures (OBM). For more information on the Blueprint revision and phase-in process, please visit TEA's College and Career Readiness School Models homepage at <https://tea.texas.gov/ccrsm/>.*

Designations are differentiated into 3 categories:

Provisional	Designated	Distinguished
<i>ECHS in the first 4 years of operation must demonstrate implementation of all design elements for each benchmark of the Blueprint and meet the Provisional ECHS outcomes-based measures.</i>	<i>ECHS in 5<sup>th</sup>+ years of operation must maintain designation by demonstrating implementation of all design elements for each benchmark of the Blueprint and meet the Designated ECHS outcomes-based measures.</i>	<i>ECHS in 5<sup>th</sup>+ years of operation must demonstrate implementation of all design elements for each benchmark of the Blueprint and meet the Distinguished ECHS outcomes-based measures.</i>

For the 2019-2020 designation year, Access, Attainment and Achievement OBM are provided to Provisional, Designated, and ECHS campuses that requested Distinguished status for formative purposes.

<b>Access</b>	<i>Do specific student groups have access to the program?</i>	Access OBM are based on the proportion of students at each campus within specific student groups (e.g., at-risk or economically disadvantaged) compared to district rates.
<b>Attainment</b>	<i>Do students attain college credit, complete rigorous courses, and earn post-secondary degrees or credentials?</i>	Attainment OBM are based on the proportions of students at each campus who persist in the program from year to year, take rigorous courses of study, earn associate degrees or Level I or Level II certificates, earn college-level credits, and graduate high school in four years compared to pre-determined criteria.
<b>Achievement</b>	<i>Do students in the program achieve successful assessment outcomes?</i>	Achievement OBM are based on the proportions of students at each campus who successfully pass achievement assessments (e.g., TSI Assessment and State of Texas Assessments of Academic Readiness end-of-course exams) compared to pre-determined criteria.

# OBM Landing Page


TEXAS EDUCATION AGENCY SECURE ENVIRONMENT

WELCOME	ACCT	TAPR	PBM	PEG	RES	CCMP
---------	------	------	-----	-----	-----	------

Houston Dev 101912 [Log Out](#)

## Outcomes-Based Measures (OBM) Summary Report for 2019-2020 Designation

College and Career Readiness School Models (CCRSM) are currently in a phase-in process for new Blueprints. These data are for information and planning purposes only. This information will not be used for designation.

The *Outcomes-Based Measures (OBM) Summary Report for 2019-2020 Designation* includes a report of the annual OBMs for each designated CCRSM including Early College High School (ECHS), Pathways in Technology Early College High School (P-TECH)/Innovative Career Industry Academies (ICIA), and Texas Science, Technology, Engineering, and Mathematics (T-STEM). For campuses operating multiple CCRSM, the report will include OBMs for each model operated. Campuses that are switching to a new CCRSM model in the 2019-2020 Designation Year will not receive a report this designation year.

Each report includes student performance measures that were calculated for that campus based on the designation type for each program. For districts with multiple CCRSM campuses, each campus appears on a separate tab of the district report.

**ECHS:**

- Provisional reports include all Access measures.
- Designated reports include all Access measures and the Algebra I EOC Achievement measure.
- Distinguished reports include all Access, Achievement, and Attainment measures.

**P-TECH:**

- Provisional reports include all Access measures.

**T-STEM:**

- Provisional reports include all Access measures.
- Designated reports include all Access measures.

**The data presented in these reports has not been used to determine 2019-2020 designation status. The report should be used as formative data to make programmatic decisions.**

Refer to the Designation Year Documentation for [ECHS](#), [P-TECH/ICIA](#), and [T-STEM](#) for additional technical information regarding the data definitions used in calculating the OBM for each CCRSM.

Retrieve Your Campus OBM Summary Report

For questions or comments about the Summary Report, please email [crcsm@tea.texas.gov](mailto:crcsm@tea.texas.gov) to contact the College and Career Readiness School Models Team.

This page last updated July 24, 2019

Texas Education Agency Secure Environment  
 Texas Education Agency, 1701 Congress Ave, Austin, TX 78701-1494



**CONFIDENTIAL**  
TEXAS EDUCATION AGENCY  
OUTCOMES-BASED MEASURES  
(2019-2020 DESIGNATION YEAR)

**NOTE: College and Career Readiness School Models (CCRSM) are currently in a phase-in process for new Blueprints. These data are for information and planning purposes only. This information will not be used for designation.**

District Name: DISTRICT A  
District Number: 111111  
Comparison District Name: DISTRICT A  
Comparison District Number: 111111

Campus Name: CAMPUS B (111111001)												
Program	Designation Type	OBM Type	Measure	OBM Criteria	Campus Num	Campus Den	Campus Rate	District Num	District Den	District Rate	Met OBM Criteria	
ECHS	Distinguished	Access	At-Risk	No more than 10% points under district	30	124	24.2%	24,011	46,625	51.5%	NO	
			Economically Disadvantaged	Meets or over-represents district	40	124	32.3%	58,471	185,625	31.5%	YES	
			English Learners †	No more than 5% points under district	2	124	1.6%	15,963	185,625	8.6%	NO	
			Students with Disabilities †	No more than 5% points under district	3	124	2.8%	14,107	185,625	7.6%	YES	
			African American	Meets or over-represents district	17	124	13.7%	38,424	185,625	20.7%	NO	
			Hispanic	Meets or over-represents district	58	124	46.8%	64,968	185,625	35.0%	YES	
			Males	Meets or over-represents district	54	124	43.5%	94,668	185,625	51.0%	NO	
		Attainment	Completing one college level English course by end of 11th grade †	100% of students	50	54	92.6%	N/A	N/A	N/A	NO	
			Completing one college level Math course by end of 11th Grade †	100% of students	30	54	55.6%	N/A	N/A	N/A	NO	



**TEXAS  
COLLEGE &  
CAREER  
READINESS  
SCHOOL  
MODELS**

	A	B	C	D	E	F	G	H	I	J	K	L
24				Earning 15 college credits (any) by graduation †	95% of students	54	54	100.0%	N/A	N/A	N/A	YES
25				Earning 30 college credits (any) by graduation †	65% of students	50	54	92.6%	<b>P</b> N/A	N/A	N/A	YES
26				Earning postsecondary degree and/or credential by high school graduation †	40% of students	6	54	11.1%	N/A	N/A	N/A	NO
27				Graduating high school in 4 years (4-year cohort graduation rate) * †	Exceeds the statewide 4-year graduation rate for the class of 2017 (89.7%)	--	--	100.0%	N/A	N/A	N/A	YES
28			Achievement	TSI College Readiness Standards-Reading †	75% passing rate	54	58	93.1%	N/A	N/A	N/A	YES
29				TSI College Readiness Standards-Writing †	85% passing rate	49	58	84.5%	N/A	N/A	N/A	YES
30				TSI College Readiness Standards-Math †	75% passing rate	44	58	75.9%	N/A	N/A	N/A	YES
31				TSI College Readiness Standards- All 3 subjects †	50% passing rate	29	58	50.0%	N/A	N/A	N/A	YES
32				Algebra I EOC Assessment in grade 9 ^	45% of students meeting the advanced standard	17	58	29.3%	N/A	N/A	N/A	NO
33	<b>Q</b>		<b>R</b>	English II EOC Assessment (grades 9-11) †	25% of students meeting the advanced standard	41	58	24.1%	N/A	N/A	N/A	YES
34	T-STEM	Designated	Access	At-Risk	No more than 15% points under district	30	92	32.6%	21,820	46,625	46.8%	NO
35				Economically Disadvantaged	No more than 5% points under district	42	92	45.7%	58,471	185,625	31.5%	YES
36				African American	No more than 5%points under district	10	92	10.9%	38,424	185,625	20.7%	NO
37				Hispanic	No more than 5%points under district	65	92	70.7%	64,968	185,625	35.0%	YES
38			<b>R</b>	Females	No more than 5%points under district	44	92	47.8%	90,956	185,625	49.0%	NO
39	P-TECH	Provisional	Access	At-Risk	No more than 20% points under district	30	56	53.6%	21,820	46,625	46.8%	YES
					No more than 10% points							
<div style="display: flex; justify-content: space-between; align-items: center;"> <span>◀ ▶</span> <span style="border: 1px solid black; padding: 2px;">111111001</span> <span>111111002</span> <span>111111003</span> <span>111111004</span> <span>111111005</span> <span>111111006</span> <span>111111007</span> <span>⊕</span> <span>⋮</span> <span>◀</span> </div>												



**TEXAS  
COLLEGE &  
CAREER  
READINESS  
SCHOOL  
MODELS**

	A	B	C	D	E	F	G	H	I	J	K	L
39	P-TECH	Provisional	Access	At-Risk	No more than 20% points under district	30	56	53.6%	21,820	46,625	46.8%	YES
40				Economically Disadvantaged	No more than 10% points under district	25	56	44.6%	58,471	185,625	31.5%	YES
41				African American	No more than 10% points under district	4	56	7.1%	38,424	185,625	20.7%	NO
42				Hispanic	No more than 10% points under district	36	56	64.3%	64,968	185,625	35.0%	YES

43 N/A denotes 'Not Applicable.' See How to Read Your Outcome-Based Measure Summary Report documentation for more information.

44 . denotes missing values.

45 If shown, (\*) indicates that students who took the Algebra I EOC in Grade 8 are not included in this calculation. S

46 If shown, (\*) indicates campus-level 4-year graduation rate numerator and denominators are not provided on this report. A double dash (--) will appear in the Campus Numerator and Campus Denominator cells for the graduation rate measure. T

47 ‡ Measure only applies to campuses that applied for the Distinguished designation in the 2019-2020 Designation Year U

48 Division of College, Career, and Military Preparation - June 11, 2019

49

50

51

52

53

54

55

56

57

58

59

60





**Q&A: Navigating the TEAL Portal and OBM Reports**



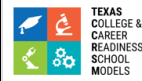
**Working Together Toward Student Success**



# Resources to Support Your Work

## We Encourage You to Share Out:

- How to Read Your OBM Summary Report
- Data Definition Documentation
- Webinar link (coming soon)
- FAQ (coming soon)
- Key findings from OBM Report



**HOW TO READ YOUR OUTCOMES-BASED MEASURES SUMMARY REPORT  
FOR THE 2019-20 DESIGNATION YEAR**

**Report Guide**

A. Header provides the DISTRICT NAME and DISTRICT NUMBER for the searched district.

B. Header provides and COMPARISON DISTRICT NAME and COMPARISON DISTRICT NUMBER that the College and Career Readiness School Model (CCRSM) programs will be compared to for Access measures.

C. Campus section header provides CAMPUS NAME and CAMPUS NUMBER. All Outcome-Based Measures (OBM) data on any particular tab relate to the district indicated by the header (A).

D. PROGRAM lists the CCRSM program(s) for each campus including Early College High School (ECHS), Texas Science, Technology, Engineering and Mathematics Initiative (T-STEM), and Pathways in Technology Early College High School (P-TECH). Campuses implementing Industry Cluster Innovative Academy (ICIA) are evaluated based on the OBM stated in the P-TECH/ICIA Blueprint.

E. DESIGNATION TYPE shows the designation (Provisional, Designated, or Distinguished) for which the campus program was measured against.

F. OBM TYPE shows the categories of OBM calculated for the program including Access, Attainment, and Achievement. This allows for grouping of measures.

G. MEASURE shows the individual measures within the OBM TYPE.

H. OBM CRITERIA shows the standards that campuses must meet for each program's DESIGNATION TYPE.

I. CAMPUS NUMERATOR shows the student counts that are in the numerator of the campus rate for a particular measure.

J. CAMPUS DENOMINATOR shows the student counts that are in the denominator of the campus rate for a particular measure.

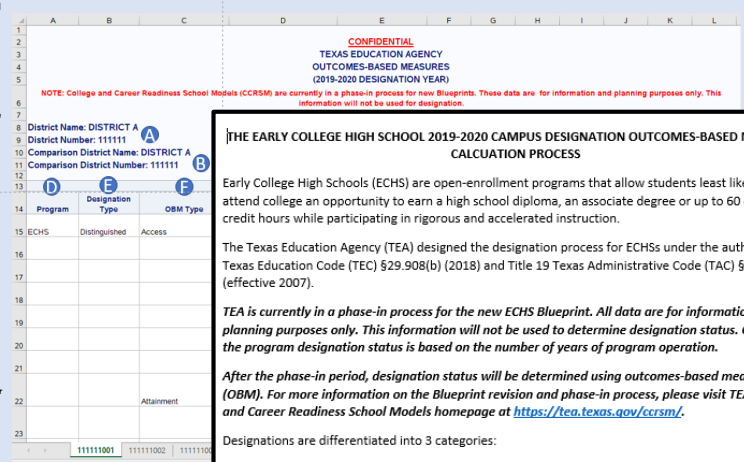
K. CAMPUS RATE shows the campus rate that is the CAMPUS NUMERATOR divided by the CAMPUS DENOMINATOR.

L. DISTRICT NUMERATOR shows the student counts that are in the numerator of the comparison district rate for a particular measure.

M. DISTRICT DENOMINATOR shows the student counts that are in the denominator of the comparison district rate for a particular measure.

N. DISTRICT RATE shows the comparison district rate that is the DISTRICT NUMERATOR divided by the DISTRICT DENOMINATOR. DISTRICT RATE only applies to Access OBM.

O. MET OBM CRITERIA shows whether a campus met (Yes) or did not meet (No) the OBM CRITERIA for a particular measure.



**CONFIDENTIAL**  
TEXAS EDUCATION AGENCY  
OUTCOMES-BASED MEASURES  
(2019-2020 DESIGNATION YEAR)

*NOTE: College and Career Readiness School Models (CCRSM) are currently in a phase-in process for new Blueprints. These data are for information and planning purposes only. This information will not be used for designation.*

District Name: DISTRICT A  
District Number: 111111  
Comparison District Name: DISTRICT A  
Comparison District Number: 111111

**THE EARLY COLLEGE HIGH SCHOOL 2019-2020 CAMPUS DESIGNATION OUTCOMES-BASED MEASURES CALCULATION PROCESS**

Early College High Schools (ECHS) are open-enrollment programs that allow students least likely to attend college an opportunity to earn a high school diploma, an associate degree or up to 60 college credit hours while participating in rigorous and accelerated instruction.

The Texas Education Agency (TEA) designed the designation process for ECHSs under the authority of Texas Education Code (TEC) §29.908(b) (2018) and Title 19 Texas Administrative Code (TAC) §102.1091 (effective 2007).

*TEA is currently in a phase-in process for the new ECHS Blueprint. All data are for information and planning purposes only. This information will not be used to determine designation status. Currently, the program designation status is based on the number of years of program operation.*

*After the phase-in period, designation status will be determined using outcomes-based measures (OBM). For more information on the Blueprint revision and phase-in process, please visit TEA's College and Career Readiness School Models homepage at <https://tea.texas.gov/ccrsm/>.*

Designations are differentiated into 3 categories:

Provisional	Designated	Distinguished
<i>ECHS in the first 4 years of operation must demonstrate implementation of all design elements for each benchmark of the Blueprint and meet the Provisional ECHS outcomes-based measures.</i>	<i>ECHS in 5<sup>th</sup>+ years of operation must maintain designation by demonstrating implementation of all design elements for each benchmark of the Blueprint and meet the Designated ECHS outcomes-based measures.</i>	<i>ECHS in 5<sup>th</sup>+ years of operation must demonstrate implementation of all design elements for each benchmark of the Blueprint and meet the Distinguished ECHS outcomes-based measures.</i>

For the 2019-2020 designation year, Access, Attainment and Achievement OBM are provided to Provisional, Designated, and ECHS campuses that requested Distinguished status for formative purposes.

Access	Attainment	Achievement
<i>Do specific student groups have access to the program?</i>	<i>Do students attain college credits, complete rigorous courses, and earn post-secondary degrees or credentials?</i>	<i>Do students in the program achieve successful assessment outcomes?</i>
Access OBM are based on the proportion of students at each campus within specific student groups (e.g., at-risk or economically disadvantaged) compared to district rates.	Attainment OBM are based on the proportions of students at each campus who persist in the program from year to year, take rigorous courses of study, earn associate degrees or Level I or Level II certificates, earn college-level credits, and graduate high school in four years compared to pre-determined criteria.	Achievement OBM are based on the proportions of students at each campus who successfully pass achievement assessments (e.g., TSI Assessment and State of Texas Assessments of Academic Readiness end-of-course exams) compared to pre-determined criteria.

# Example for How to Share Key Findings

**CONFIDENTIAL**  
TEXAS EDUCATION AGENCY  
OUTCOMES-BASED MEASURES  
(2019-2020 DESIGNATION YEAR)

**NOTE: College and Career Readiness School Models (CCRSM) are currently in a phase-in process for new Blueprints. These data are for information and planning purposes only. This information will not be used for designation.**

**District Name: Mid-Size ISD**

**District Number: 001122**

**Comparison District Name: Mid-Size ISD**

**Comparison District Number: 001122**

**Campus: Mid-Size EARLY COLLEGE H S (001122333)**

Program	Designation Type	OBM Type	Measure	OBM Criteria	Campus Num	Campus Den	Campus Rate	District Num	District Den	District Rate	Met OBM Criteria
ECCHS	Provisional	Access	At-Risk	No more than 20% points under district	127	297	42.8%	5,990	11,222	61.1%	YES
			Economically Disadvantaged	No more than 10% points under district	268	610	43.9%	2,317	4,518	58.6%	NO
			African American	No more than 10% points under district	184	610	30.2%	1,720	4,518	35.5%	YES
			Hispanic	No more than 10% points under district	217	610	35.6%	2,163	6,118	30.5%	YES
			Males	No more than 10% points under district	215	610	35.2%	21,140	41,518	50.9%	NO

N/A denotes 'Not Applicable.' See How to Read Your Outcome-Based Measure Summary Report documentation for more information.

. denotes missing values.

N/A denotes 'Not Applicable.' See How to Read Your Outcome-Based Measure Summary Report documentation for more information.

. denotes missing values.

# Example for How to Share Key Findings



**NOTE: College and Career Readiness School Models (CCRSM) are currently in a phase-in process for new Blueprints. These data are for information and planning purposes only. This information will not be used for designation.**

**District Name: Mid-Size ISD**

**District Number: 001122**

**Comparison District Name: Mid-Size ISD**

**Comparison District Number: 001122**

**Campus: Mid-Size EARLY COLLEGE H S (001122333)**

Program	Designation Type	OBM Type	Measure	OBM Criteria	Campus Rate	District Rate	Met OBM Criteria
ECHS	Provisional	Access	At-Risk	No more than 20% points under district	42.8%	61.1%	YES
			Economically Disadvantaged	No more than 10% points under district	43.9%	58.6%	NO
			African American	No more than 10% points under district	30.2%	35.5%	YES
			Hispanic	No more than 10% points under district	35.6%	30.5%	YES
			Males	No more than 10% points under district	35.2%	50.9%	NO

N/A denotes 'Not Applicable.' See How to Read Your Outcome-Based Measure Summary Report documentation for more information.

. denotes missing values.



## Data-Driven Decision Making

- Develop Processes to Support Continuous Improvement
  - Analyze Campus OBM Summary Report for areas in need of additional supports
  - Compare across campuses at the district level to identify exemplar practices and systemic challenges
  - Share your ideas/needs with your technical assistance campus coach
  - Develop/revise outreach & recruitment strategies
  - intervention strategies



## Data-Driven Decision Making

- Intentional planning for OBM phase-in
  - Leadership team should prioritize efforts to improve student success
  - What needs to happen this year to meet Achievement/Attainment OBMs?

# Continuous Improvement

## Building the Capacity of the Network

- Educate Texas Coaches and Regional Managers
  - Help you understand your Key Findings and develop a plan to meet OBMs.
  - Leverage experience and best practices of campus leaders and IHE/industry partners
  - Serve as a thought partner for increasing fidelity to the CCRSM Blueprints design and improving required products
  - Utilize cross-sector collaboration for addressing ongoing barriers to student success

# Attend A Fall Regional Convening

*\*Plan to attend with 2-3 from your campus leadership team and your district liaison.*

<b>Lubbock</b>	• September 17, 2019
<b>Houston</b>	• September 19, 2019
<b>Fort Worth</b>	• September 25, 2019
<b>Austin</b>	• October 1, 2019
<b>El Paso</b>	• October 3, 2019
<b>Tyler</b>	• October 10, 2019
<b>Harlingen</b>	• October 16, 2019

# Call to Action

## Next Steps

- Download your Summary OBM Report and Review
- Use and share TEA documentation resources so other know how their work supports student success
- Convene Leadership Team of stakeholders to share what's working and what challenges need to be addressed
- Begin planning for Attainment and Achievement OBM
- Utilize the CCRSM Network for continuous improvement
- Share your thoughts => TEA is in the process of ECHS Blueprint Revision and is actively seeking input on how to improve the model and OBMs



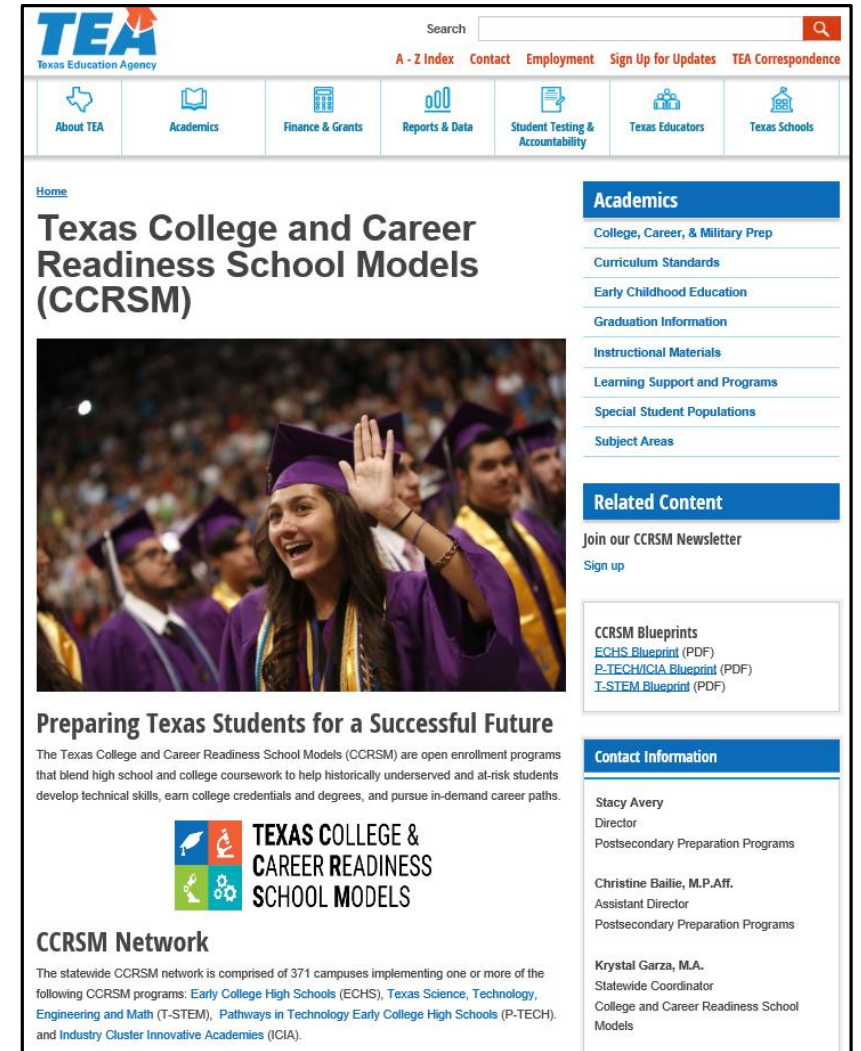
# Web Resources

## Technical Assistance Provider

- Community of Practice, Resources & Calendar of Events

## Texas Education Agency: Resources & Info

- CCMP Division Homepage
- CCRSM Homepage**
- CCRSM Designation Portal
- P-TECH Program
- Industry Cluster Innovation Academy
- CTE Information & Resources
- Funding for CTE
- Campus, District & Statewide Data
- Texas Schools Report Card



The screenshot shows the TEA website with a search bar and navigation menu. The main content area features the title "Texas College and Career Readiness School Models (CCRSM)" and a large image of graduates. Below the image is a section titled "Preparing Texas Students for a Successful Future" with a brief description of the CCRSM programs. A sidebar on the right contains "Academics" and "Related Content" sections. The "Related Content" section lists "CCRSM Blueprints" for ECHS, P-TECH/ICIA, and T-STEM. The "Contact Information" section lists Stacy Avery as Director and Christine Baillie as Assistant Director.



**Question & Answer: Reminder to Submit Questions**



## Who has access to the TEAL online portal?

- Check with your district leadership. Your superintendent has authority and may select other staff as appropriate. This is a local decision.

## Do our IHE partners have access to TEAL?

- No. This is FERPA protected data so you should not share the OBM Summary Report to those outside of the district. You may share OBM percentages with your IHE liaison to determine how you can better coordinate efforts towards improving student outcomes.

## When should I coordinate with my PEIMS Coordinator for OBM Reporting?

- Refer to the PEIMS data reporting calendar established by the agency that are required submission deadlines. Please work with your PEIMS coordinator prior to these submission timelines to provide accurate student rosters for those enrolled in CCRSM programs



## How does our campus model affect PEIMS reporting?

- Students participating in CCRSM programs are coded in PEIMS. Each student is only allowed to participate in 1 model. A campus may operate multiple CCRSM programs, however, they must serve distinct student cohorts.

## What is considered the end of 11<sup>th</sup> grade year in terms of PEIMS Reporting?

- In order to leverage innovation at the campus level, we will include the summer after 11<sup>th</sup> grade for all metrics calculated at the end of 11<sup>th</sup> grade.

## Why isn't Algebra I included on my OBM Summary Report?

- Provisional ECHS campuses do not receive Algebra I data. Only Designated and Distinguished ECHS campuses have Algebra I EOC included on their OBM Summary Reports. Refer to the OBM chart in the Blueprint for additional information.



## **Our campus did not receive an OBM Summary Report. We are entering our first year of implementation. Will we receive our report soon?**

- There are multiple reasons a district won't receive a report. The most likely reason is that a campus moved from a planning year (2018-19) to provisional status in 2019-20. Additional reasons may include: a) if you switched CCRSM models, b) your CCRSM students reported through a different district, or c) you had PEIMS data errors because you didn't submit PEIMS data for a group of students.

## **What happens if our campus didn't successfully meet Access OBM?**

- OBM are currently in a phase-in process over the next 4 years so consider any data as benchmark data with the goal of working towards meeting state standards for designation. Begin to implement intervention strategies and leverage technical assistance provided by Educate Texas to learn how others are successful.



# Question & Answer

# TEA Contact Information

**Christine Bailie, M.P.Aff.**

Assistant Director, Postsecondary Preparation Programs

**Jennifer Broussard, Ph.D.**

Director, Research and Evaluation

**CCRSM Network and OBM/TEAL Inquiries: [ccrsm@tea.texas.gov](mailto:ccrsm@tea.texas.gov)**